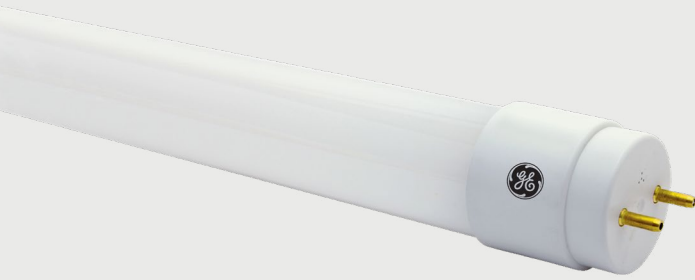




LED Lamps - Tubes



Type C LED Tubes and Drivers

Current's Type C LED Tubes and Drivers are the preferred LED Tube choice for applications that demand dimming, controllability and flexibility. Type C LED Tubes operate from the low voltage DC output of the drivers. With LumenChoice® Drivers and LumenChoice® + SpectraChoice™ Type C LED Tubes, fewer SKUs can be used to address the needs of an entire facility.

PERFORMANCE HIGHLIGHTS:

| Type C LED Tubes | |
|----------------------------|----------------------------|
| Light Output: | 950 - 4,400 Lumens |
| CRI: | 80 |
| Fixed CCT: | 3000K, 3500K, 4000K, 5000K |
| Selectable CCT: | 3500K/4000K/5000K |
| Wattage: | 6-18W, 36W |
| Life: | 50,000 - 70,000 hours |
| Temperature Rating: | -20° to 45° C |
| Rating: | Damp |
| Fixtures: | Open or Enclosed |
| Dimming: | 0-10V with dimming driver |

LIMITED WARRANTY

7 years for 70,000 hours
5 years for 50,000 hours

FEATURES:

Robust and Flexible System:

- Dedicated external LED drivers deliver low voltage Class 2 output from drivers to Type C LED Tubes
- Field-tunable driver output settings
- 0-10V dimming, readily integrated with controls
- Same lamps may be used on different drivers
- T8 & T5 lamps in a variety of lengths and light outputs
- 2.3X longer life than LFL (70,000 vs. 30,000 hours)

BENEFITS:

- Low voltage DC to lampholders
- 0-10V dimming on drivers allows control of many fixtures with few control devices
- LumenChoice® drivers are field-tunable, allowing light levels to be optimized in each space & enabling more energy savings
- LumenChoice® tubes may be used on various drivers, reducing SKU count and simplifying BOMs
- LumenChoice® + SpectraChoice™ tubes provide flexibility with different color temperatures, perfect for every application

LEARN MORE:

To learn more about saving money and energy, go to www.LED.com.



Not all product variations listed on the page are DLC qualified. To ensure that a specific model is qualified, visit www.designlights.org/search.



Type C Tubes

CUSTOMER NAME _____
 PROJECT NAME _____
 DATE _____ NOTES _____

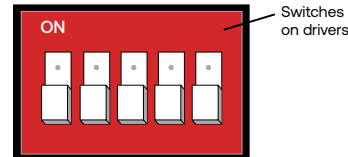
Remote Drivers for Type C LED Tubes

| Input Watts (Max.) | Order Code | Description | Input Voltage | Carton Qty ² | Length (in) | Width (in) | Height (in) | Freq. (Hz) | Power Factor | Output Voltage | Max. Output Current (A) | Min. Temp.° | Max Temp.° | 0-10V Dimmable | Default Wattage per Tube Setting | Additional Information |
|---|------------|-----------------|---------------|-------------------------|-------------|------------|-------------|------------|--------------|----------------|-------------------------|-------------|------------|----------------|----------------------------------|------------------------------|
| LumenChoice® Remote Drivers - Selectable Output for Type C LED Tubes | | | | | | | | | | | | | | | | |
| 36 | 93313132 | LED/6-18/DR/D2L | 120-347 VAC | 10 | 9.5 | 1.3 | 1.2 | 60 | >0.9 | 26-34 VDC | 0.53x2 | -4° F | 104° F | Yes | 12W | Max. 2 Tubes: Class 2 Output |
| 72 | 93313181 | LED/6-18/DR/D4L | 120-347 VAC | 10 | 9.5 | 1.7 | 1.2 | 60 | >0.9 | 26-34 VDC | 0.53x4 | -4° F | 104° F | Yes | 12W | Max. 4 Tubes: Class 2 Output |
| LumenChoice® Remote Drivers - Selectable Output for Type C LED Tubes | | | | | | | | | | | | | | | | |
| 66 | 21379 | LED/DR/D4L/LW | 120-277 VAC | 10 | 9.5 | 1.7 | 1.2 | 60 | >0.9 | 26-34 VDC | 0.48x4 | -4° F | 104° F | Yes | 12W | Max. 4 Tubes: Class 2 Output |
| Fixed Wattage Remote Drivers for Type C LED Tubes | | | | | | | | | | | | | | | | |
| 72 | 63126 | LED36T8/DR/D2L | 120-277 VAC | 10 | 9.5 | 1.7 | 1.2 | 60 | >0.9 | 26-34 VDC | 1.06x2 | -4° F | 104° F | Yes | 36W | Max. 2 Tubes: Class 2 Output |

Programming LumenChoice™ Drivers

Before installation, LumenChoice™ Drivers must be set to the desired output. Lumen levels corresponding to the driver settings below are noted in the specification tables. Adjust the switches on the side of the driver to achieve the desired performance according to the table below.

| DRIVER DESCRIPTIONS | | DRIVER PRODUCT CODES | | | | |
|------------------------------------|-------------|----------------------|-----|-----|-----|--|
| LED/6-18/DR/D2L LED/6-18/DR/D4L | | 93313132 93313181 | | | | |
| SYSTEM WATTS PER LAMP | SWITCH CODE | | | | | |
| | 1 | 2 | 3 | 4 | 5 | |
| 18 | OFF | OFF | OFF | OFF | OFF | |
| 15 | ON | OFF | OFF | OFF | OFF | |
| 12 | OFF | ON | OFF | OFF | OFF | |
| 9 | OFF | OFF | ON | OFF | OFF | |
| 6 | OFF | OFF | OFF | ON | OFF | |





Type C Tubes

CUSTOMER NAME _____
 PROJECT NAME _____
 DATE _____ NOTES _____

Remote Drivers for Type C LED Tubes

| Input Watts (Max.) | Order Code | Description | Input Voltage | Carton Qty ² | Length (in) | Width (in) | Height (in) | Freq. (Hz) | Power Factor | Output Voltage | Max. Output Current (A) | Min. Temp. ¹ | Max Temp. | 0-10V Dimmable | Default Wattage per Tube Setting | Additional Information |
|---|------------|-----------------|---------------|-------------------------|-------------|------------|-------------|------------|--------------|----------------|-------------------------|-------------------------|-----------|----------------|----------------------------------|------------------------------|
| LumenChoice® Remote Drivers - Selectable Output for Type C LED Tubes | | | | | | | | | | | | | | | | |
| 36 | 93313132 | LED/6-18/DR/D2L | 120-347 VAC | 10 | 9.5 | 1.3 | 1.2 | 60 | >0.9 | 26-34 VDC | 0.53x2 | -4° F | 104° F | Yes | 12W | Max. 2 Tubes: Class 2 Output |
| 72 | 93313181 | LED/6-18/DR/D4L | 120-347 VAC | 10 | 9.5 | 1.7 | 1.2 | 60 | >0.9 | 26-34 VDC | 0.53x4 | -4° F | 104° F | Yes | 12W | Max. 4 Tubes: Class 2 Output |

LumenChoice® + SpectraChoice™ T8 Type C LED Tube and Driver System - T8 on 6-18W 120-347V Drivers

| Bulb Shape | Base Type | Order Code | Description | Carton Qty ² | MOL (in) | Selectable Color Temp. (Initial) | CRI | Rated Life L70 (Hrs) ¹ | DLC ⁰⁴ | Location Rating ³ | Initial Lumens at Driver Settings: | | | | | |
|--|-----------|------------|------------------|-------------------------|----------|----------------------------------|-----|-----------------------------------|-------------------|------------------------------|------------------------------------|------|------|------|------|--|
| | | | | | | | | | | | 6W | 9W | 12W | 15W | 18W | |
| LumenChoice® + SpectraChoice™ 4 ft T8 Glass Tube - Selectable CCT | | | | | | | | | | | | | | | | |
| T8 | G13 | 93322420 | LEDT8/LC/G/4/8SC | 20 | 48 | 3500K 4000K 5000K | 80 | 70,000 | - | Damp | 1050 | 1500 | 1950 | 2300 | 2700 | |
| LumenChoice® + SpectraChoice™ 3 ft T8 Glass Tube - Selectable CCT | | | | | | | | | | | | | | | | |
| T8 | G13 | 93322422 | LEDT8/LC/G/3/8SC | 20 | 36 | 3500K 4000K 5000K | 80 | 70,000 | - | Damp | 1050 | 1500 | 1900 | 2250 | 2600 | |
| LumenChoice® + SpectraChoice™ 2 ft T8 Glass Tube - Selectable CCT | | | | | | | | | | | | | | | | |
| T8 | G13 | 93322418 | LEDT8/LC/G/2/8SC | 20 | 24 | 3500K 4000K 5000K | 80 | 70,000 | - | Damp | 1000 | 1450 | 1850 | | | |

LumenChoice® T8 Type C LED Tube and Driver System - T8 on 6-18W 120-347V Drivers

| Bulb Shape | Base Type | Order Code | Description | Carton Qty ² | MOL (in) | Color Temp. (Initial) | CRI | Rated Life L70 (Hrs) ¹ | DLC ⁰⁴ | Location Rating ³ | Initial Lumens: | | | | | |
|---|-----------|------------|--------------------|-------------------------|----------|-----------------------|-----|-----------------------------------|-------------------|------------------------------|-----------------|------|------|------|------|--|
| | | | | | | | | | | | 6W | 9W | 12W | 15W | 18W | |
| LumenChoice® 4 ft T8 Glass Tubes - Fixed CCT | | | | | | | | | | | | | | | | |
| T8 | G13 | 34211 | LEDT8/LC/G/4/830 | 20 | 48 | 3000K | 80 | 70,000 | Yes | Damp | 750 | 1150 | 1550 | 1900 | 2250 | |
| | G13 | 93314798 | LEDT8/LC/G/4/835XL | 20 | 48 | 3500K | 80 | 70,000 | Yes | Damp | 1000 | 1450 | 1850 | 2250 | 2600 | |
| | G13 | 93314800 | LEDT8/LC/G/4/840XL | 20 | 48 | 4000K | 80 | 70,000 | Yes | Damp | 1050 | 1500 | 1900 | 2300 | 2650 | |
| | G13 | 93314802 | LEDT8/LC/G/4/850XL | 20 | 48 | 5000K | 80 | 70,000 | Yes | Damp | 1050 | 1500 | 1900 | 2300 | 2650 | |
| LumenChoice® U1 T8 T8 Glass Tubes - 1-5/8" leg spacing - Fixed CCT | | | | | | | | | | | | | | | | |
| T8-U1 | 2G13 | 28084 | LED14T8/U/835 | 15 | 22.5 | 3500K | 80 | 50,000 | - | Damp | 750 | 1100 | 1550 | | | |
| | 2G13 | 28164 | LED14T8/U/840 | 15 | 22.5 | 4000K | 80 | 50,000 | - | Damp | 750 | 1100 | 1550 | | | |
| LumenChoice® U6 T8 Glass Tubes - 6" leg spacing - Fixed CCT | | | | | | | | | | | | | | | | |
| T8-U6 | 2G13 | 43131 | LED15T8/G/U6/830 | 12 | 22.5 | 3000K | 80 | 50,000 | - | Damp | 700 | 1050 | 1450 | 1700 | | |
| | 2G13 | 43135 | LED15T8/G/U6/835 | 12 | 22.5 | 3500K | 80 | 50,000 | - | Damp | 750 | 1100 | 1550 | 1800 | | |
| | 2G13 | 43143 | LED15T8/G/U6/840 | 12 | 22.5 | 4000K | 80 | 50,000 | - | Damp | 750 | 1100 | 1550 | 1800 | | |
| | 2G13 | 43145 | LED15T8/G/U6/850 | 12 | 22.5 | 5000K | 80 | 50,000 | - | Damp | 750 | 1100 | 1550 | 1800 | | |

Remote Drivers for Type C LED Tubes

| Input Watts (Max.) | Order Code | Description | Input Voltage | Carton Qty ² | Length (in) | Width (in) | Height (in) | Freq. (Hz) | Power Factor | Output Voltage | Max. Output Current (A) | Min. Temp. ¹ | Max Temp. | 0-10V Dimmable | Wattage per Tube | Additional Information |
|--|------------|----------------|---------------|-------------------------|-------------|------------|-------------|------------|--------------|----------------|-------------------------|-------------------------|-----------|----------------|------------------|------------------------------|
| Fixed Wattage Remote Drivers for Type C LED Tubes | | | | | | | | | | | | | | | | |
| 72 | 63126 | LED36T8/DR/D2L | 120-277 VAC | 10 | 9.5 | 1.7 | 1.2 | 60 | >0.9 | 26-34 VDC | 1.06x2 | -4° F | 104° F | Yes | 36W | Max. 2 Tubes: Class 2 Output |

8ft T8 Type C LED Tube and Driver System - T8 on 36W Driver

| Bulb Shape | Base Type | Order Code | Description | Carton Qty ² | MOL (in) | Color Temp. (Initial) | CRI | Rated Life L70 (Hrs) ¹ | DLC ⁰⁴ | Location Rating ³ | Input Watts per Lamp | Lumens (Initial) | 2-Lamp 36W Driver | |
|---|-----------|------------|-----------------|-------------------------|----------|-----------------------|-----|-----------------------------------|-------------------|------------------------------|----------------------|------------------|-------------------|----------------|
| | | | | | | | | | | | | | Order Code | Description |
| LumenChoice® 4 ft T8 Glass Tubes - Fixed CCT | | | | | | | | | | | | | | |
| T8 | Fa8 | 62327 | LED36T8/G/8/835 | 20 | 96 | 3500K | 80 | 50,000 | Yes | Damp | 36 | 4400 | 63126 | LED36T8/DR/D2L |
| | Fa8 | 62329 | LED36T8/G/8/840 | 20 | 96 | 4000K | 80 | 50,000 | Yes | Damp | 36 | 4400 | 63126 | LED36T8/DR/D2L |
| | Fa8 | 62349 | LED36T8/G/8/850 | 20 | 96 | 4000K | 80 | 50,000 | Yes | Damp | 36 | 4400 | 63126 | LED36T8/DR/D2L |

¹ The life rating is based on the hours of operation the lamp will provide before reaching 70% of its original lumen output (L70)

² Minimum order quantity = Carton Qty

³ UL 1993 Environmental Requirements for LED LAMPS

Damp Location - Exterior or interior location that is normally or periodically subject to condensation of moisture in, on, or adjacent to electrical equipment, including partially protected locations

⁴ Not all product variations on this page are DLC qualified. Visit qpl.designlights.org/solid-state-lighting to confirm qualification.



Type C Tubes

CUSTOMER NAME _____
 PROJECT NAME _____
 DATE _____ NOTES _____

Remote Drivers for Type C LED Tubes

| Input Watts (Max.) | Order Code | Description | Input Voltage | Carton Qty ² | Length (in) | Width (in) | Height (in) | Freq. (Hz) | Power Factor | Output Voltage | Max. Output Current (A) | Min. Temp. ¹ | Max Temp. | 0-10V Dimmable | Default Wattage per Tube Setting | Additional Information |
|---|------------|-----------------|---------------|-------------------------|-------------|------------|-------------|------------|--------------|----------------|-------------------------|-------------------------|-----------|----------------|----------------------------------|------------------------------|
| LumenChoice® Remote Drivers - Selectable Output for Type C LED Tubes | | | | | | | | | | | | | | | | |
| 36 | 93313132 | LED/6-18/DR/D2L | 120-347 VAC | 10 | 9.5 | 1.3 | 1.2 | 60 | >0.9 | 26-34 VDC | 0.53x2 | -4° F | 104° F | Yes | 12W | Max. 2 Tubes: Class 2 Output |
| 72 | 93313181 | LED/6-18/DR/D4L | 120-347 VAC | 10 | 9.5 | 1.7 | 1.2 | 60 | >0.9 | 26-34 VDC | 0.53x4 | -4° F | 104° F | Yes | 12W | Max. 4 Tubes: Class 2 Output |

LumenChoice® T5 Type C LED Tube and Driver System - T5 on 6-18W 120-347V Drivers

| Bulb Shape | Base Type | Order Code | Description | Carton Qty ² | MOL (in) | Color Temp. (Initial) | CRI | Rated Life L70 (Hrs) ¹ | DLC ⁴ | Location Rating ³ | Initial Lumens at Low Wattage Settings: | | | | |
|--|-----------|------------|--------------------|-------------------------|----------|-----------------------|-----|-----------------------------------|------------------|------------------------------|---|------|------|------|------|
| | | | | | | | | | | | 6W | 9W | 12W | 15W | 18W |
| LumenChoice® 4 ft T5 XL Glass Tubes - Fixed CCT | | | | | | | | | | | | | | | |
| T5 | G5 | 93314792 | LEDT5/LC/G/4/835XL | 20 | 46 | 3500K | 80 | 70,000 | Yes | Damp | 1150 | 1700 | 2150 | 2650 | 3050 |
| | G5 | 93314794 | LEDT5/LC/G/4/840XL | 20 | 46 | 4000K | 80 | 70,000 | Yes | Damp | 1200 | 1750 | 2200 | 2700 | 3100 |
| | G5 | 93314796 | LEDT5/LC/G/4/850XL | 20 | 46 | 5000K | 80 | 70,000 | Yes | Damp | 1200 | 1750 | 2200 | 2700 | 3100 |
| LumenChoice® 3 ft T5 HE Glass Tubes - Fixed CCT | | | | | | | | | | | | | | | |
| T5 | G5 | 39001 | LEDT5LC/G3/835HE | 20 | 34 | 3500K | 80 | 70,000 | - | Damp | 850 | 1250 | 1600 | 1950 | 2300 |
| | G5 | 39002 | LEDT5LC/G3/840HE | 20 | 34 | 4000K | 80 | 70,000 | - | Damp | 900 | 1300 | 1650 | 2000 | 2300 |
| | G5 | 39003 | LEDT5LC/G3/850HE | 20 | 34 | 5000K | 80 | 70,000 | - | Damp | 900 | 1300 | 1650 | 2000 | 2300 |
| LumenChoice® 2 ft T5 Glass Tubes - Fixed CCT | | | | | | | | | | | | | | | |
| T5 | G5 | 38968 | LEDT5/LC/G/2/830 | 20 | 22 | 3000K | 80 | 70,000 | - | Damp | 800 | 1200 | 1550 | 1800 | 2150 |
| | G5 | 38980 | LEDT5/LC/G/2/835 | 20 | 22 | 3500K | 80 | 70,000 | - | Damp | 800 | 1200 | 1600 | 1850 | 2200 |
| | G5 | 38983 | LEDT5/LC/G/2/840 | 20 | 22 | 4000K | 80 | 70,000 | - | Damp | 850 | 1250 | 1650 | 1900 | 2200 |
| | G5 | 38992 | LEDT5/LC/G/2/850 | 20 | 22 | 5000K | 80 | 70,000 | - | Damp | 850 | 1250 | 1650 | 1900 | 2200 |

¹ The life rating is based on the hours of operation the lamp will provide before reaching 70% of its original lumen output (L70)

² Minimum order quantity = Carton Qty

³ UL 1993 Environmental Requirements for LED LAMPS

Damp Location - Exterior or interior location that is normally or periodically subject to condensation of moisture in, on, or adjacent to electrical equipment, including partially protected locations

⁴ Not all product variations on this page are DLC qualified. Visit qpl.designlights.org/solid-state-lighting to confirm qualification.